

CARBON FURLER

RECKMANN



RC • 30/40 •

MANUAL CARBON ROLLER REEFING SYSTEM FOR RACERS AND CRUISERS



▶ EF90 Electric Reefing System



▶ RF90 Reefing Hydraulic System

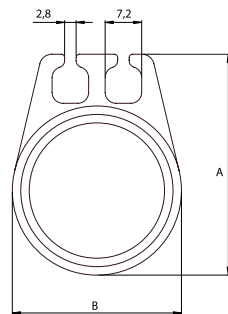


▶ RS2000 Reefing System

We've developed the RC 30 and RC40 carbon systems for sailors, who up to now have operated a Tuff Luff racing forestay system in addition to their standard roller reefing system in order to satisfy their racing ambitions. They were developed to eliminate the need for cumbersome retrofitting prior to each race. They are designed for yachts from approx. 42 to 68 feet with forestay lengths up to about 30 metres. As one meter of the double groove carbon profile weighs only from 0.327 kg (S2) to 0.77 kg (S4), the entire system is so light that it weighs even less than the corresponding racing profile forestay system. The RC 30 and RC 40 are hence very light reefing systems for cruising and you no longer require any other system for racing.

Prior to the race, both halves of the carbon drum are removed with a few manual turns in order to tack the sail on deck.

The mast can also be significantly more easily trimmed over the light carbon profile, as a significantly reduced backstay tension is required. The weight savings of approx. 25 kg over a conventional system naturally also reduces the pitching moment.



Profile	A (mm)	B (mm)	Weight (kg/m)	X (mm)	T (mm)	H (mm)
RC30 S2	38,3	28,6	0,327	251	192	80
RC40 S3	49,0	38,5	0,62	293,5	230	136,5
RC40 S4	55,4	44,4	0,77	303,5	230	136,5

