

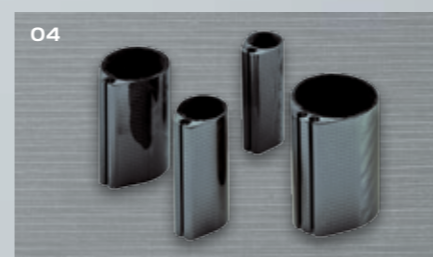
| EF90-SYSTEMS |



POWERED BY PASSION

EF90 REEFING SYSTEMS COMFORT ALL THE WAY

Sailing is always an experience and provides a genuine taste of freedom. You can also take the opportunity to make this experience greater still: by improving it from a technical aspect. We've been working hard and passionately on this for several decades – with more than satisfactory results. A good example of this is the EF90 electric reefing system: excellently designed, extremely efficient but low maintenance, safe to use, smooth running, flexible and exhibiting the legendary durability that characterizes our products. The basis for these qualities is our refusal to compromise on good workmanship, using only high quality materials and a newly developed, low maintenance drive technology. The EF90 is designed for yachts between 36 (EF 90-2) and approx. 75 feet (EF 90-3) in length; Wire forestays of between 8 and 16 mm – as well being designed for optimum comfort and safe handling in any situation.



IN DETAIL: ADVANTAGES AND AND IMPROVEMENTS TO THE EF90 SERIES

- 01 Reassuring: Emergency manual back up unit**
When you need to crank it by hand, the EF90 offers a unique support tool: a standard winch handle can be used to disengage the electric drive. Because of this special gear mechanism that prevents sail forces from transferring to the winch handle, the reefing system can be safely and easily operated, even when in manual mode.
- 02 Simple: integrated length adjustment.**
The integrated length adjustment is easy to use and works even with tacked sail. This means that rigs and sails can be trimmed exactly.
- 03 Safe: FS Halyard Swivel**
The almost torque-free Reckmann high-performance halyard swivels turn with extremely low amounts of friction, thereby guaranteeing a secure operation without twisting the halyard. Another advantage: a low top weight created by using a compact design and size graduation.
- 04 Light: carbon fibre profile**
Up to 50 to 60 % lighter than conventional aluminum profiles, but incredibly strong, a clear performance increase and a genuine improvement.

Model	EF90-2	EF90-3		
Profile / for rod up to	R20 (-17)	R30 (-30)	R40 (-48)	R50 (-76)
max. Forestay length [m]	18	23	27	31
for wire of up to [mm]	10	12	14	16

More measurements available on request

CONTACT

If you have any more questions about our products, we would be happy to answer them. **Tel. +49(0)4101-3849-0**

Or check out our website:
www.reckmann.com



POWERED BY PASSION

SPECTACULAR IMPRESSIONS. VISIONARY IDEAS. REVOLUTIONARY TECHNOLOGY.

All Reckmann products have one thing in common: Our need and desire to develop and offer you as our customer the best possible solution available on the market. It doesn't matter whether it's a standard product or a custom-made specialist solution. Whether it's designed for Regatta sailors, cruisers, super yacht customers or businesses in general. We want you to be satisfied. And it's been that way for more than 120 years ...



FOR SAILING YACHTS

- Headsail Furlers
- Boom Reef Systems
- Mast Roller Systems
- Rigging Hydraulics
- Mast Jack Systems
- Hydraulic Units
- Emergency Rig Cutters
- Accessories/Spare Parts
- Rigging/Hydraulics Service



FOR MOTOR YACHTS

- SAILTEC-Systems
- sunDECK
- sunFLIP
- Safety Rails
- proSCREEN
- slideShade
- sunHATCH
- proSPORT
- paraSOL



FOR ARCHITECTURE

- Shading Systems
(manual/automatic)

Siemensstraße 37–39
25462 Rellingen

Tel. +49(0)4101-3849-0
Fax +49(0)4101-3849-50

www.reckmann.com
info@reckmann.com



POWERED BY PASSION